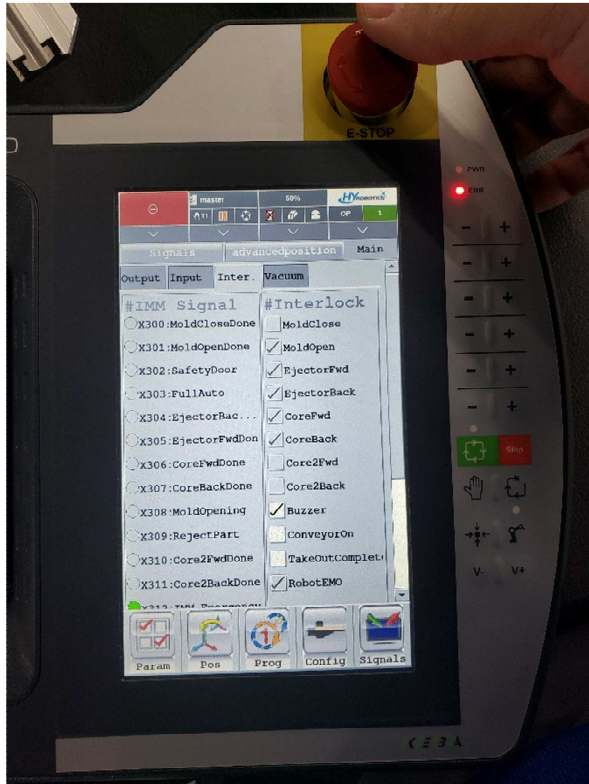


# Epik , UNIK Robot E stop circuit Description

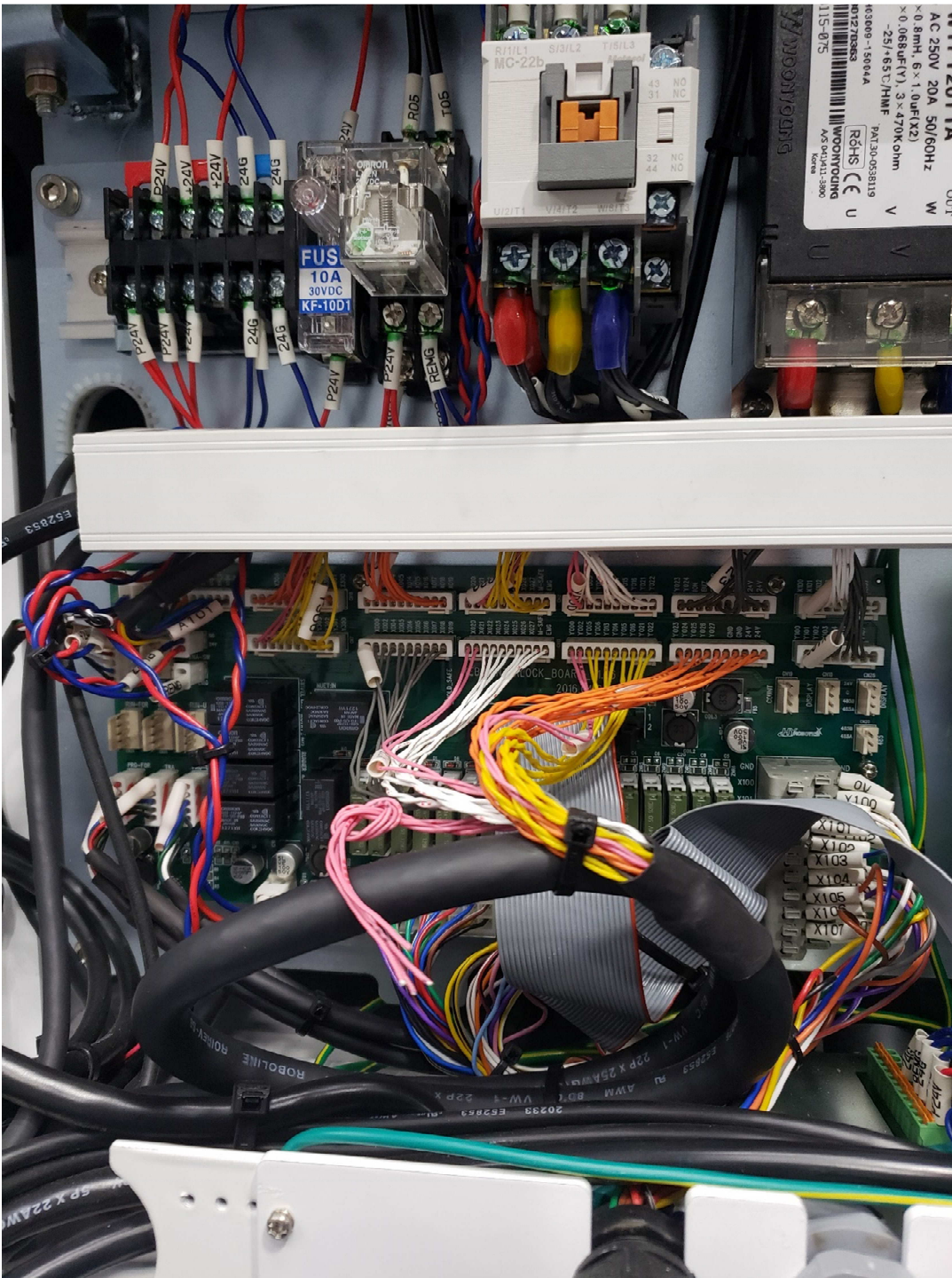
1. Press E Stop on Pendant. ( Check mark stay on if robot is in use )



2. Go to pendant Socket and REMG is signal



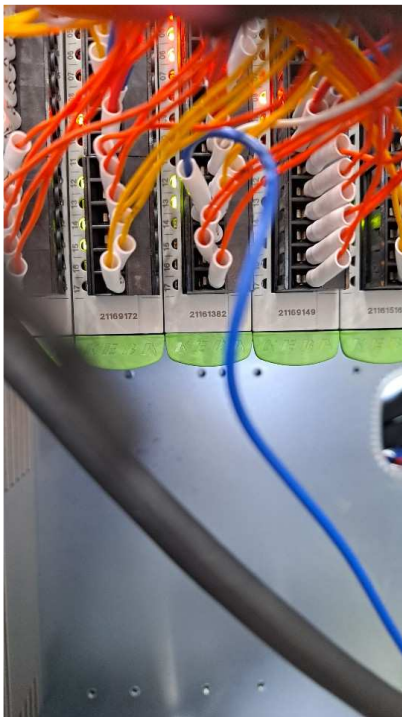
3. REMG goes to Motor Contactor turn on Relay and split 2 more location.



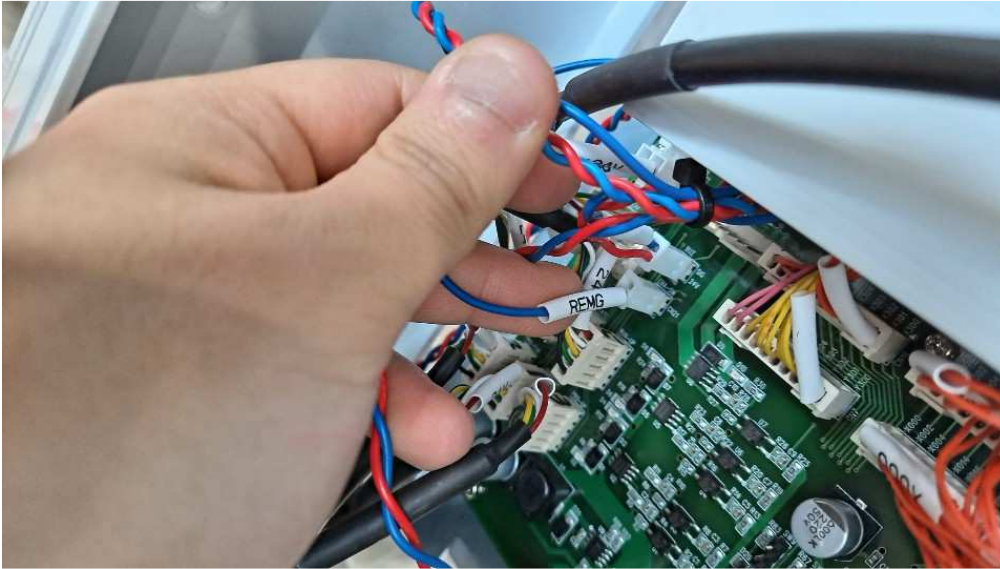
4. REMG connected to 3 location.
5. 1<sup>st</sup> One is Motor Contactor Relay and split 2 other location.



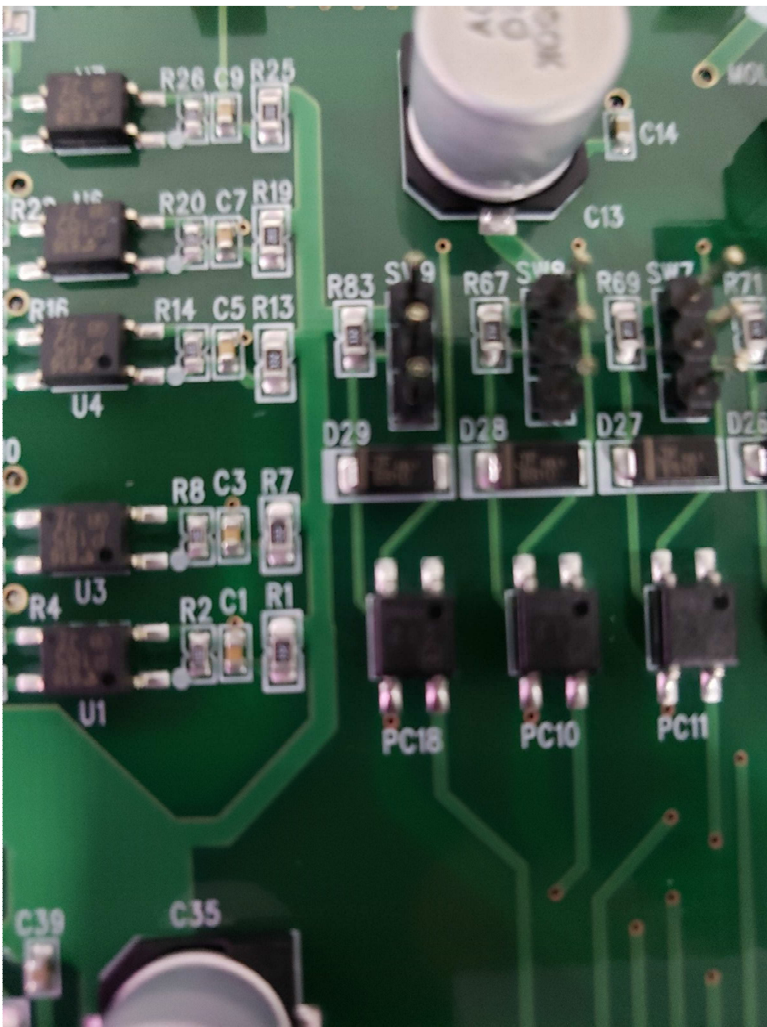
6. PLC input : Blue wire : DI-3-2( Robot E Stop input to PLC ), Module 3 and digital input 2



7. IMM Interlock board : REMG



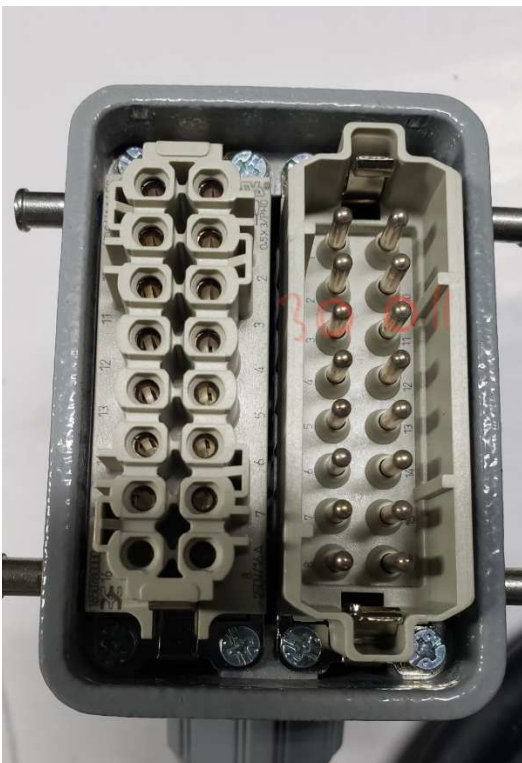
8. IMM Interlock I.O PC 18 will turn on and off ( This is new style interface board, old style might have relay )



- 9. PC 18 will on and off for below Wire.
- 10. 18 pin connector number PIN 1 and 16 pin connector PIN 7



- 11. This will be connect to SPI Plug : Male pin 3 and 11 for E stop.
- 12. E Stop pressed : 3 and 11 will be open contact
- 13. E Stop released : 3 and 11 will be closed contact



If you have question, [sales@hyrobotics.com](mailto:sales@hyrobotics.com)  
[www.hyrobotics.com](http://www.hyrobotics.com)